

REVISIONS			
REV.	DESCRIPTION	DATE	APPROVED
A	PR422	30-JUL-99	R B H
B	EC 2360	15-OCT-99	R B H
C	EC 2454	28-FEB-00	R B H

D

D

C

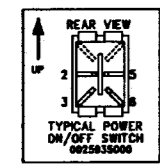
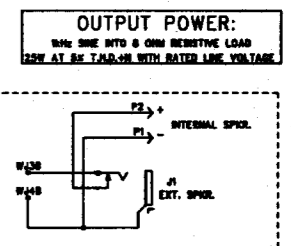
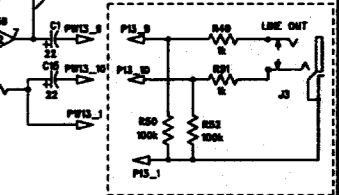
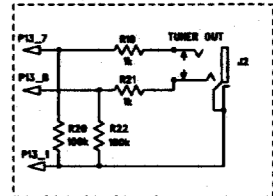
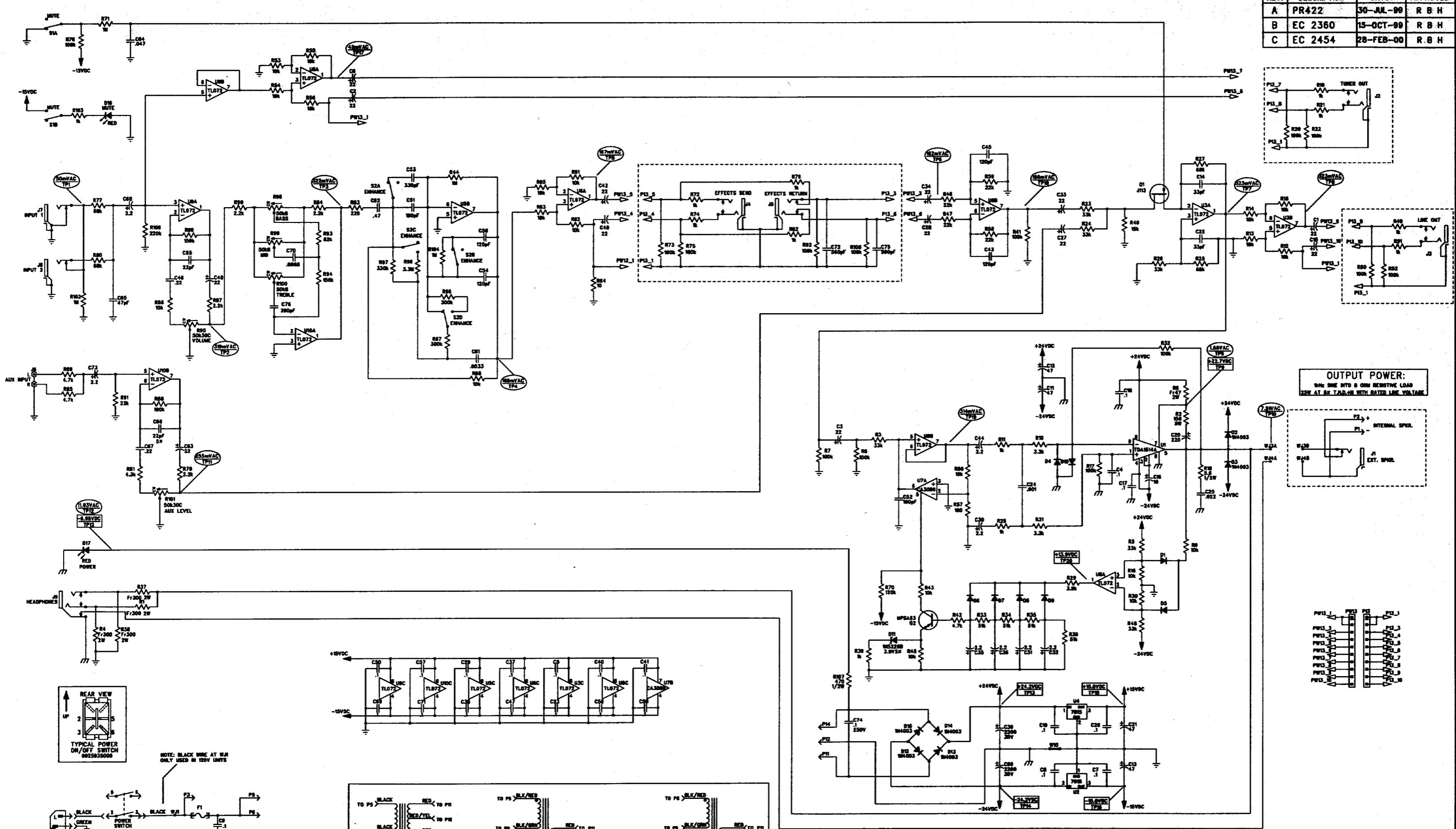
C

B

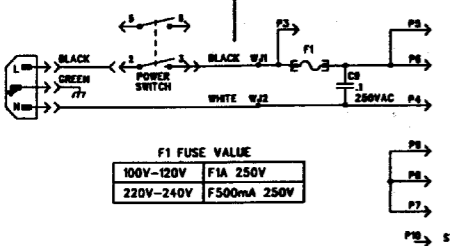
B

A

A

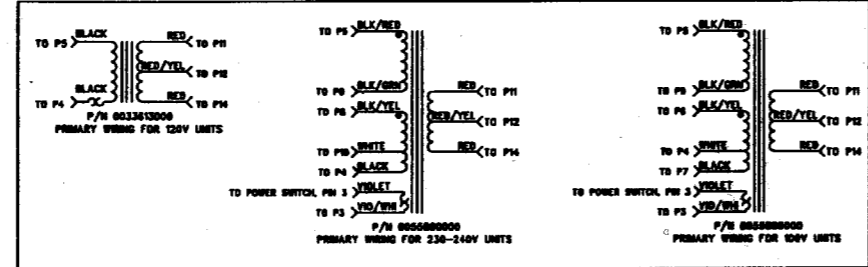


NOTE: BLACK WIRE AT W/A ONLY USED IN 120V UNITS



F1 FUSE VALUE
100V-120V F1A 250V
220V-240V F500mA 250V

ALL FASTON TABS ARE 350° EXCEPT P4, P7, AND P10 WHICH ARE 187°



- ALL VOLTAGES READ TO GROUND WITH A DVN UNDER THE FOLLOWING CONDITIONS:
P13S CONNECTED TO P13
P13S CONNECTED TO P13
ALL CONTROLS AT "0" POSITION
P13S - SIGNALS ARE WAVE INPUT TO C7 (S-1 OR S-2 FOR TP1)
 - THE SCHEMATIC IS FOR PCB FABRICATION P/N 000000000 AND PCB ASSEMBLY P/N 000000000 AND 000000000.
 - ALL DIMENSIONS ARE IN INCHES.
 - ALL PULSED CAPACITORS IN μ , 50V; SOV MINIMUM.
 - ALL UNPULSED CAPACITORS IN μ , 50V OR BETTER; SOV MINIMUM.
 - OPTICAL SUPPLY BYPASS CAPACITORS ARE 50V.
 - ALL RESISTORS IN OHM, Ω ; 1/4W.
- NOTES: (UNLESS OTHERWISE NOTED)

THIS DOCUMENT CONTAINS INFORMATION OF A PROPRIETARY NATURE TO FENDER MUSICAL INSTRUMENTS AND IS LOANED TO YOU IN CONFIDENCE AND SHALL NOT BE DISCLOSED OR TRANSMITTED TO OTHERS WITHOUT APPROVAL FROM FENDER MUSICAL INSTRUMENTS.

CHECKED BY: *[Signature]*
DATE: 10-16-00

APPROVED BY: *[Signature]*
DATE: 10-16-00

DRABER, R. MACK
DATE: R. MACK
DATABASE FILE: 24223.SCH

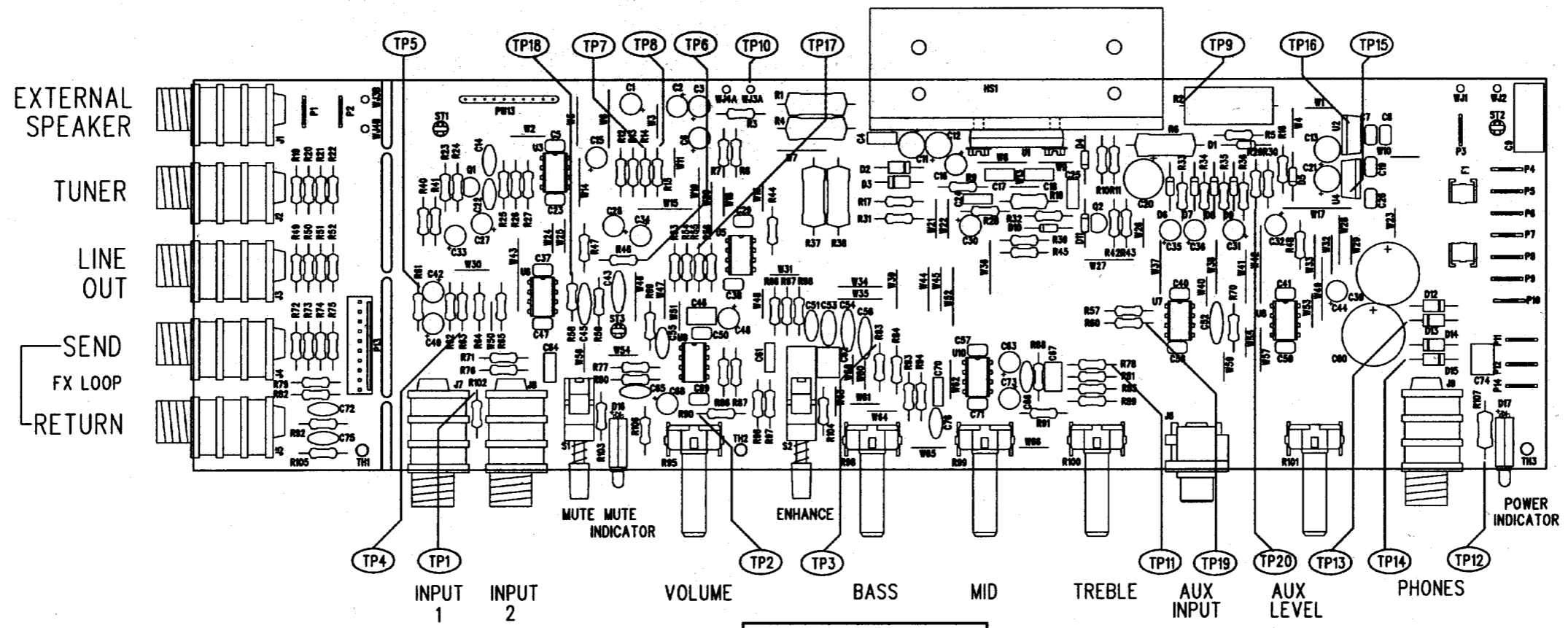
Fender MUSICAL INSTRUMENTS
2621 Research Drive
Corona, CA U. S. A.

TITLE: SERVICE DIAGRAM COMBINED (schematic)
BASSMAN 25

SIZE	DRAWING NUMBER	REV.
D	0055621000	C

RELEASE DATE: 30-JUL-99
SHEET: 1 OF 2


REVISIONS			
REV.	DESCRIPTION	DATE	APPROVED
A	PR422	30-JUL-99	R.B.H.
B	EC 2360	13-OCT-99	R.B.H.
C	EC 2454	28-FEB-00	R.B.H.



FILM/DWG: SERVICE DIAGRAM
 DATABASE: Z422P.PCB DATE: 28-FEB-00

1. SEE SHEET 1 FOR PRIMARY WIRING, TEST CONDITIONS AND TESTPOINT VALUES.

NOTES: (UNLESS OTHERWISE NOTED)

<small>THIS DOCUMENT CONTAINS INFORMATION OF A PROPRIETARY NATURE TO FENDER MUSICAL INSTRUMENTS AND IS SUBMITTED TO YOU IN CONFIDENCE AND SHALL NOT BE DISCLOSED OR TRANSMITTED TO OTHERS WITHOUT AUTHORIZATION FROM FENDER MUSICAL INSTRUMENTS.</small>		 MUSICAL INSTRUMENTS 2621 Research Drive Corona, CA U. S. A.	
CHECKED BY: <i>B. [Signature]</i> DATE: <i>10-APR-00</i>		TITLE: SERVICE DIAGRAM, COMBINED (PCB assy) BASSMAN 25	
APPROVED BY: <i>[Signature]</i> DATE: <i>10-APR-00</i>		SIZE: C	DRAWING NUMBER: 0055621000
DESIGNER: A. BARRON ENGR: R. WACK		RELEASE DATE: 30-JUL-99	REV: C
DATABASE FILE: Z422P.PCB		SHEET 2 OF 2	